

Attachment B - Photos

**Jerusalem Schoolhouse
Starksboro, Vermont**



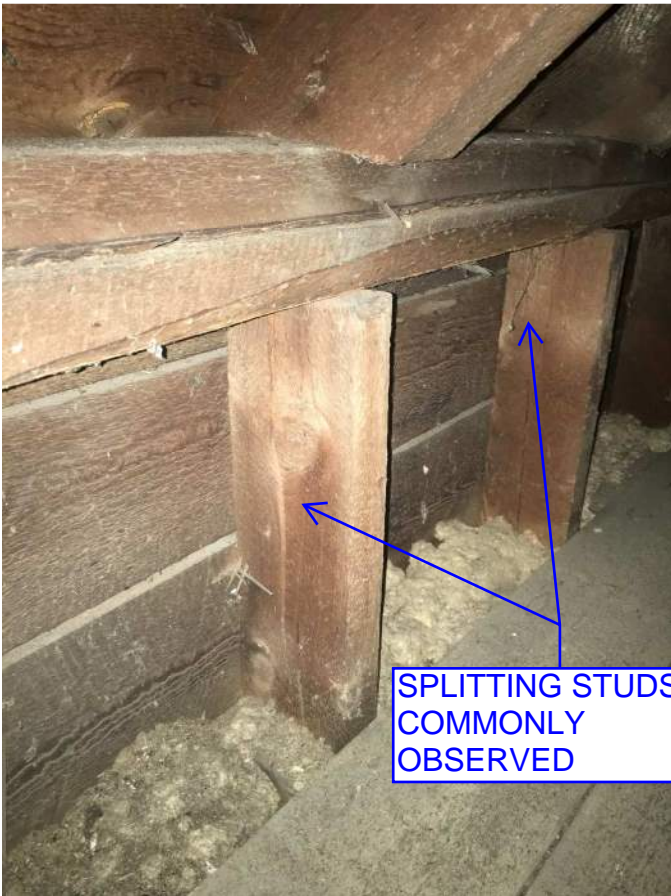
PHOTO 1: 1876 SCHOOLHOUSE



ROTTED FLOOR BEAM

SILL REPLACED WITH PRESSURE TREATED LUMBER

PHOTO 2: SCHOOLHOUSE FOUNDATION



SPLITTING STUDS- COMMONLY OBSERVED

PHOTO 3: SPLITTING AT TOP OF WALL STUD



ROTTED SHEATHING

PHOTO 4: SCHOOLHOUSE CHIMNEY



PHOTO 5: 1876 SCHOOLHOUSE



PHOTO 6: SCHOOLHOUSE ROOF FRAMING



PHOTO 7: ROT AT TOP PLATE



PHOTO 8: SCHOOLHOUSE CHIMNEY



PHOTO 9: CRACKING IN NORTH ADDITION FOUNDATION



PHOTO 10: EAST ADDITION FOUNDATION

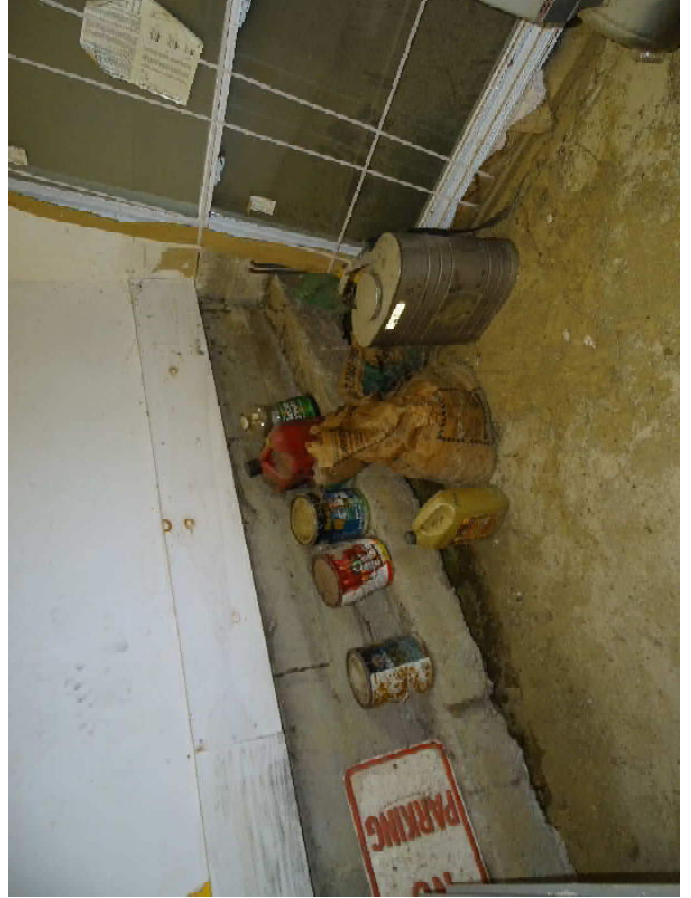


PHOTO 11: EAST ADDITION FOUNDATION



PHOTO 12: EAST ADDITION SIDING DAMAGE